

RIVERSIDE'S NATIONAL THEATRE OF PARRAMATTA AND SYDNEY THEATRE COMPANY PRESENT

# WHITE PEARL

BY ANCHULI FELICIA KING

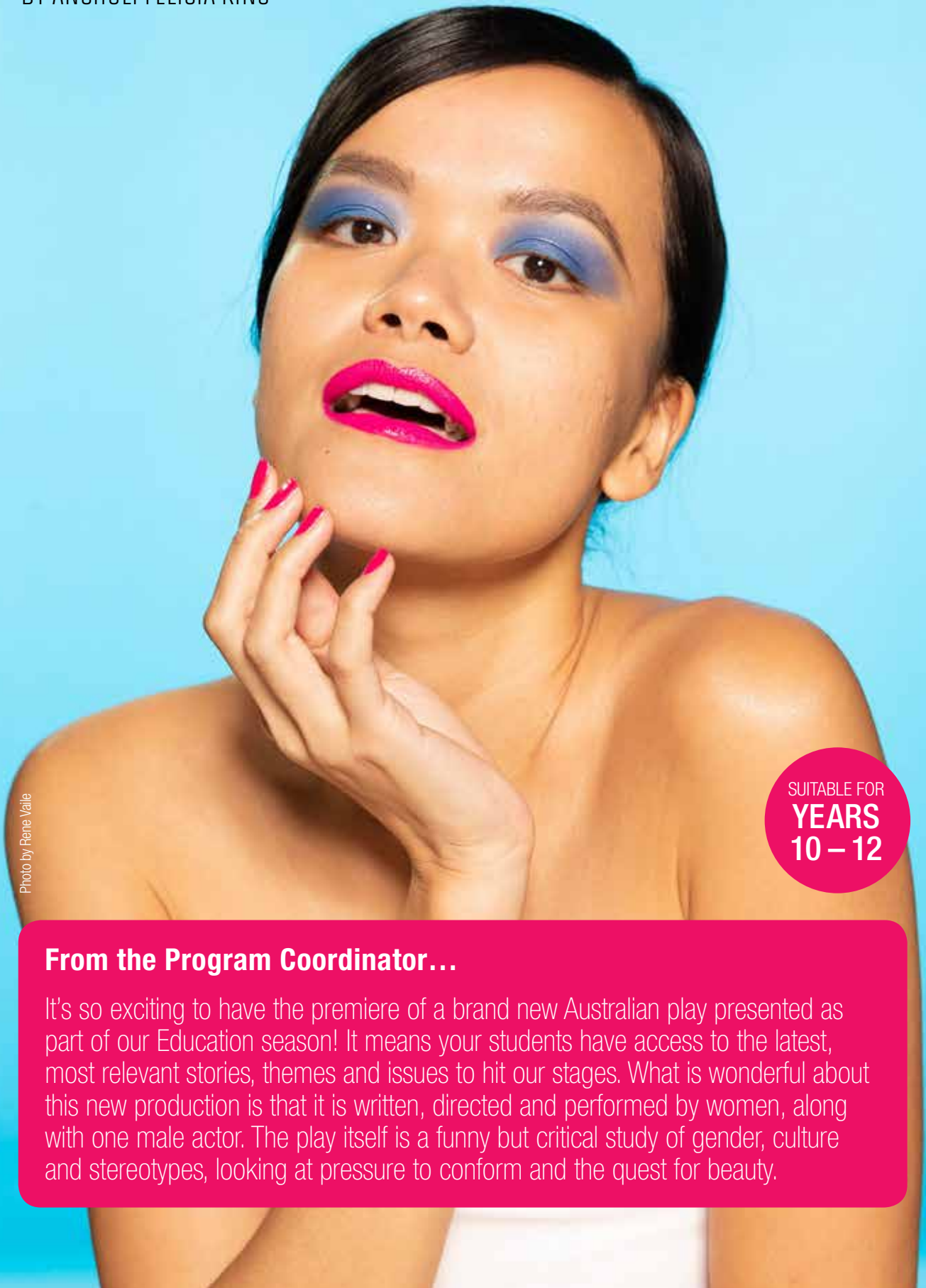


Photo by Rene Valle

SUITABLE FOR  
**YEARS**  
10 – 12

## From the Program Coordinator...

It's so exciting to have the premiere of a brand new Australian play presented as part of our Education season! It means your students have access to the latest, most relevant stories, themes and issues to hit our stages. What is wonderful about this new production is that it is written, directed and performed by women, along with one male actor. The play itself is a funny but critical study of gender, culture and stereotypes, looking at pressure to conform and the quest for beauty.

RIVERSIDE'S NATIONAL THEATRE OF PARRAMATTA AND SYDNEY THEATRE COMPANY PRESENT

# WHITE PEARL

BY ANCHULI FELICIA KING

DIRECTOR

**Priscilla Jackman**

DRAMATURG

**Courtney Stewart**

PERFORMER

**Merlynn Tong**

A nasty truth goes viral...

In Singapore, it's just another day at the office of Clearday cosmetics. That is, until they discover that their new TV commercial has been leaked online. The video goes viral for all the wrong reasons. Someone is definitely going to get fired.

Anchuli Felicia King's new play is a ruthlessly entertaining portrait of toxic corporate culture, casual racism and the complexity of pan-Asian relations. As the team at Clearday scrambles to contain the fallout, the open-plan, glass-door office proves to be a nest of secrets, lies and resentments.

Don't miss your chance to bring your students to the Australian premiere of this rich play, jam-packed full of twists, dark comedy and brutal honesty. Book early – Tickets selling fast!



*White Pearl was first developed by Playwriting Australia through its National New Play Development Program and the National Play Festival in 2018. This project has been assisted by the Australian Government through the Australia Council, its arts funding and advisory body.*

DURATION	DATES & TIMES	PRICE
85 minutes (No interval plus 20 minute Q&A for the performance on 29 October and the daytime performance on 30 October)	Thursday 24 October at 7:30pm Friday 25 October at 7:30pm Tuesday 29 October at 7:30pm Wednesday 30 October at 1:30pm & 7:30pm Thursday 31 October at 7:30pm Friday 1 November at 7:30pm Saturday 2 November at 2:30pm & 7:30pm Tuesday 5 November at 7:30pm Wednesday 6 November at 7:30pm (Audio Described) Thursday 7 November at 7:30pm Friday 8 November at 7:30pm Saturday 9 November at 2:30pm & 7:30pm	\$23 per student & additional teachers
<b>FYI</b> This production contains strong language, adult themes and sexual references		

**Book Now at [riversideparramatta.com.au/education](http://riversideparramatta.com.au/education)**

**NSW STATE CURRICULUM LINKS** – For more detailed curriculum information see our website

SUBJECT	CONTENT	OUTCOMES
<b>Stage 5</b>		
English	Text type: Drama. Texts that provide insights about the peoples and cultures of Asia. A wide range of cultural, social and gender perspectives, popular and youth cultures.	EN5-1A, EN5-3B, EN5-5C, EN5-7D, EN5-8D
Drama	Topics: Modern Australian Theatre, Women in Theatre, Asian Perspectives. Elements of Production	5.2.2, 5.2.3, 5.3.1, 5.3.2, 5.3.3
<b>Stage 6 (Year 11)</b>		
English – Advanced	Module A: Narratives that Shape our World	EA11-1, EA11-2, EA11-3, EA11-5, EA11-6, EA11-7, EA11-8
Drama	Theatrical Traditions and Performance Styles: Modern Australian Theatre, Women and Gender Perspectives in Theatre. Elements of Production in Performance	P1.2, P1.3, P2.6, P3.1, P3.2, P3.4
Society and Culture	The Social and Cultural World. Intercultural Communication	P1, P2, P3, P4, P5
<b>Stage 6 (HSC)</b>		
English – Standard	Module A: Language, Identity and Culture OR Common Module: Texts and Human Experiences (Supplementary Text)	EN12-1, EN12-2, EN12-3, EN12-5, EN12-6, EN12-7, EN12-8
English – Advanced	Common Module: Texts and Human Experiences (Supplementary Text)	EA12-1, EA12-2, EA12-3, EA12-5, EA12-6, EA12-7, EA12-8
Society and Culture	Social Conformity and Non-conformity	H1, H2, H3, H4, H5